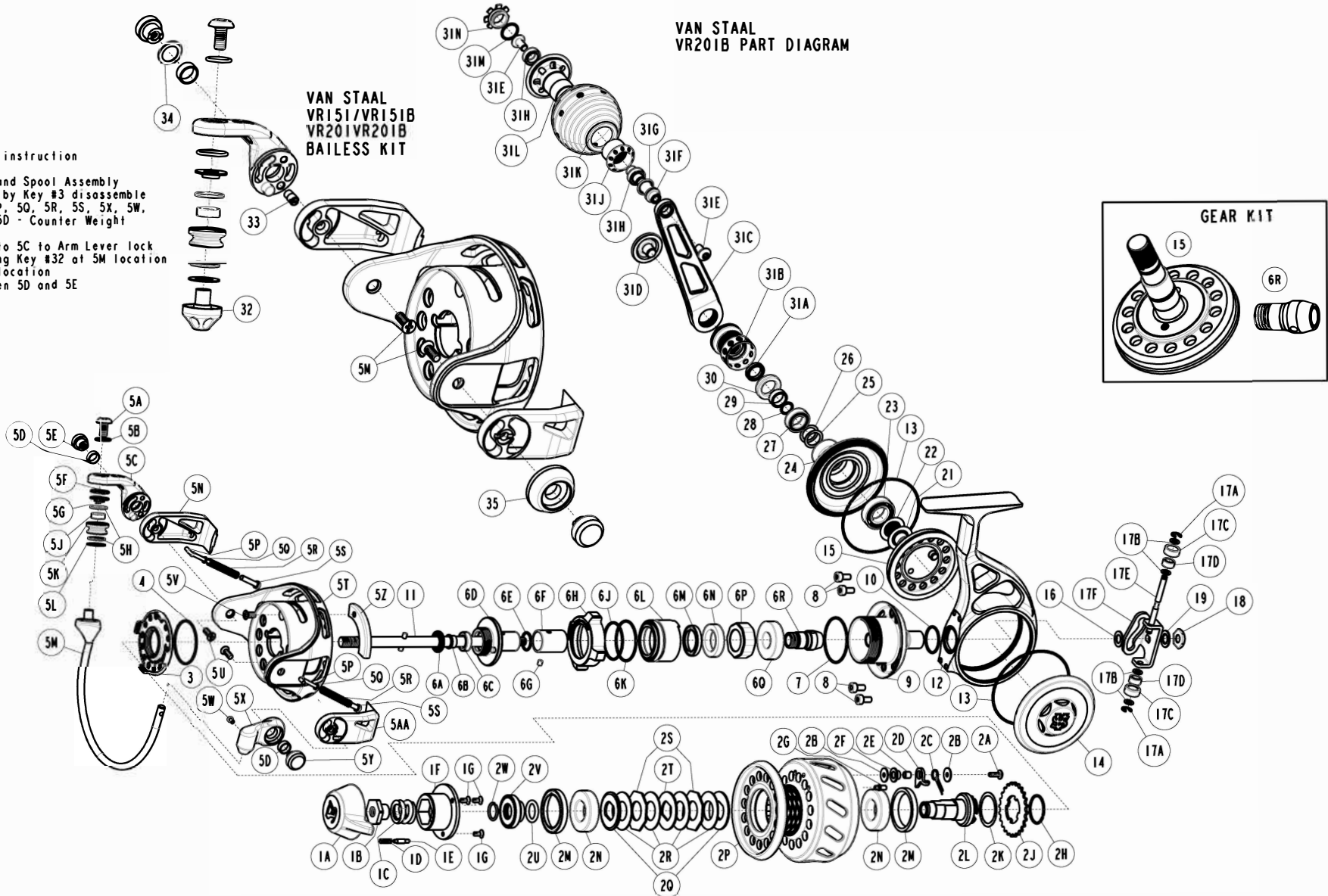


**Bailess Kit Assembly instruction**

- 1) Disassemble Drag and Spool Assembly
- 2) Disassemble Rotor by Key #3 disassemble
- 3) Remove key #5M, 5P, 5Q, 5R, 5S, 5X, 5W, 5V, 5Z, 5U, and 5D (5D - Counter Weight Side only)
- 4) Assemble Key #33 to SC to Arm Lever lock
- 5) Assemble Back using Key #32 at 5M location  
And key #35 to 5X location
- 6) Add key #34 between 5D and 5E

**VAN STAAL  
VR151/VR151B  
VR201VR201B  
BAILESS KIT**

**VAN STAAL  
VR201B PART DIAGRAM**



**Van Staal VR201B Part List**

Key No.	Description	Part No.	Q'TY	Key No.	Description	Part No.	Q'TY	
		VR201B				VR201B		
1	Drag Knob Assembly include	VR332-81	1	6F	Clutch Sleeve	VR139-02	1	
	1A - Drag Knob	VR032-81	1	6G	Clutch Sleeve Pin	VR149-01	1	
	1B - Drag Nut	VS066-01	1	6H	Lock Ring	VS122-04	1	
	1C - Drag Spring	VBQ043-01	1	6J	Clutch Housing O-Ring "B"	ORR8	1	
	1D - Drag Click Spring	SH049-01	1	6K	Clutch Housing O-Ring "A"	VS1591	1	
	1E - Drag Click Pawl	VBQ149-01	1	6L	Clutch Housing	VR038-01	1	
	1F - Drag Knob Cap	VBQ071-01	1	6M	Main Seal	VR252-02	1	
	1G - Drag Knob Cap Screw	HX107-04	3	6N	Clutch Support Bearing	BGRS5	1	
	2	Spool Assembly (Kit) include	VR321-92	1	6P	One Way Clutch	VR063-02	1
		2A - Spool Click Pawl Screw	QW053-10	1	6Q	Pinion Gear Ball Bearing	BGR02	1
2B - Spool Clicker Washer		VBQ076-01	2	7	Lock Ring O-Ring	VR101-01	1	
2C - Spool Click Pawl Spring		VBQ068-01	1	8	Body Neck Screw	VR054-01	4	
2D - Spool Click Pawl		VS103-02	1	9	Body Neck Assembly	VR341-04	1	
2E - Spool Clicker Holder		VBQ122-01	1	10	Body Neck O-Ring	VR164-01	1	
2F - Spool Click Collar		VBQ141-01	1	11	Spool Shaft Assembly	VS315-01	1	
2G - Spool Click Spring Pin		VBQ114-01	1	12	Body	VR001-53	1	
2H - Spool Click Ratchet Holding Ring		VS036-01	1	13	Body Cover O-Ring	VS145-01	2	
2J - Spool Click Ratchet		VS037-01	1	14	Service Cover	VR024-04	1	
2K - Ratchet Spacer Washer		VR035-01	1		Gear Kit	VRL4312-01	1	
2L - Spool Hub		VS213-01	1		6R - Pinion Gear Assembly			
2M - Drag Seal		OSPR3	2		15 - Drive Gear Assembly			
2N - Spool Ball Bearing		BGRS3	2	16	Spool Shaft Spacer	VR026-01	1	
2P - Spool		VR021-92	1	17	O/S Slider Assembly (Kit) include	VR4025-01	1	
2Q - Drag "D" Washer - Chamfered		VP080-01	2		17A - E-Clip	NX092-01	2	
2R - Drag Disc		VP039-01	4		17B - O/S Slider Bearing Spacer	VR029-01	4	
2S - Drag Octagon Washer		VP081-01	2		17C - O/S Slider Bearing Wear Ring	VR106-01	2	
2T - Drag "D" Washer		VR045-01	1		17D - O/S Slider Bearing	XX117-03	2	
2U - Spool Retainer O-Ring		ORR3	1		17E - O/S Slider Bearing Shaft	VR115-01	1	
2V - Spool Retainer		VS2024	1		17F - O/S Slider	VR025-01	1	
2W - Spool Retainer Ring		SR3041	1	18	M5x0.8 Hex Nut	VR014-01	1	
3		Rotor Nut	VR006-04	1	19	Teeth Washer	WSLCIT1	1
4		Rotor Nut O-Ring	VR145-01	1	21	Drive Gear Adjust Washer	DF035-02	0
5		Rotor Assembly (Kit) include	VRL4009-31	1	22	Drive Gear Adjust Washer	DF035-05	0
		5A - Line Slider Screw	VR108-01	1	23	Gear Bearing	CF017-05	1
		5B - Line Slider Screw O-Ring	VS164-01	1	24	Body Cover	VR023-04	1
		5C - Bail Arm Lever	VRL007-02	1	25	Body Cover Ball Bearing Adjust Washer	VR084-01	0
	5D - Arm Lever Bushing	VR158-01	2	26	Body Cover Ball Bearing Adjust Washer	VR084-02	0	
	5E - Arm Lever Cap	VR113-02	1	27	Body Cover Ball Bearing	TW058-06	1	
	5F - Arm Lever O-Ring	VS101-01	1	28	Handle Sleeve O-Ring	VR098-01	1	
	5G - Line Roller Spacer "A"	VR016-01	1	29	Handle Sleeve	VS110-01	1	
	5H - Line Roller Seal	VR262-01	2	30	Gear Shaft Seal	VS109-01	1	
	5J - Line Roller Ball Bearing	CT157-06	1	31	Handle Assembly include	VR318-04	1	
	5K - Line Roller	VR004-01	1		31A - Handle Stand Insert	VS158-01	1	
	5L - Line Roller Spacer "B"	VR102-01	1		31B - Handle Stand	VS058-05	1	
	5M - Bail Assembly	VRL347-31	1		31C - Handle Arm	VR018-04	1	
	5N - Bail Spring Cover Support	VRL046-02	1		31D - Handle Cap	VS054-03	1	
	5P - Bail Spring Link	VS095-01	2		31E - Handle Knob Screw	VR077-02	2	
	5Q - Bail Spring Spacer	VR048-01	2		31F - Handle Knob Shaft	VR005-02	1	
	5R - Bail Spring	VR022-01	2		31G - Handle Knob Seal	VR262-01	1	
	5S - Bail Spring Pivot	VR095-01	2		31H - Handle Knob Ball Bearing	VR028-02	2	
	5T - Rotor	VR009-31	1		31J - Handle Knob Nut	VS014-02	1	
	5U - Bail Spring Cover Screw	VR057-01	2		31K - Handle Knob	VR013-01	1	
	5V - Counter Weight Screw	VR057-02	1		31L - Handle Knob Hub	VR003-02	1	
	5W - Bail Holder Screw	VR051-01	1		31M - Handle Knob Cap O-Ring	VS101-01	1	
	5X - Bail Holder	VRL017-12	1		31N - Handle Knob Cap	VR073-02	1	
	5Y - Bail Holder Cap	VS113-01	1		Wrench - Service Cover	VR170-01	1	
	5Z - Counter Weight	VS148-01	1					
		5AA - Bail Spring Cover Support	VR046-02	1		<b>Bailless Kit</b>	<b>VR4010-01</b>	<b>1</b>
	6A	Spool Shaft Guide Seal	VR171-10	1	32	Line Slider - Bailless	VS010-01	1
	6B	Spool Shaft Bearing Bushing	VR259-01	1	33	Arm Lever Locking Pin	VR085-01	1
6C	Spool Shaft Bearing	CH027-06	1	34	Arm Lever Spacer Washer	VR109-01	1	
6D	Spool Shaft Guide Assembly	VR375-04	1	35	Balancer	VS017-01	1	
6E	Spool Shaft Guide O-Ring	VS101-01	1	5U	Bail Spring Cover Screw	VR057-01	2	